

Corners to be Indexed

NE 5-107-42  
N 1/4 5-107-42

FEB 16 2021

*Karen Braun*

I hereby certify that this document and the data contained herein was prepared by me or under my direct supervision.

*Daniel L. Buettel*

4/14/20  
Date

Daniel L. Buettel

License No. 43844

### CERTIFICATE OF LOCATION OF GOVERNMENT CORNER

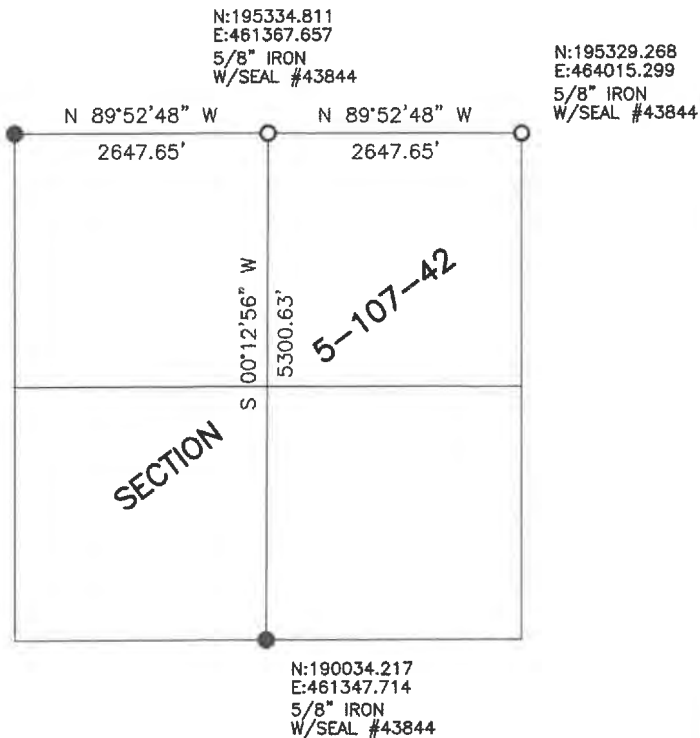
Land survey monuments situated in Section 5, Township 107, Range 42, 5TH P.M.

STATE OF MINNESOTA, County of MURRAY



- FOUND MONUMENT
- SET MONUMENT

N:190034.217  
E:461347.714  
5/8" IRON  
W/SEAL #43844



Minnesota State Plane Coordinate  
System Murray County Datum NAD83 (1996)

Statement of Evidence

NE 5-107-42

In 1861, J.W. Myer did the original survey of the north line of the township.

On October 22, 2019 Bueltel-Moseng Land Surveying looked for the corner and found nothing. Set 5/8" iron w/seal #43844.

N1/4 5-107-42

In 1861, J.W. Myer did the original survey of the north line of the township.

On October 22, 2019 Bueltel-Moseng Land Surveying set 5/8" iron w/seal #43844 midway and online between section corners, fits centerline of roads N-S/E-W.